



## TB8100 BASE STATION/REPEATER

The TB8100 is a highly flexible base station/repeater, ideal for any application: a simple conventional repeater, POCsAG paging transmitter, advanced TaitNet Quasi-Sync or MPT 1327 trunked system.

### Flexible communications

- 255 channels with up to 16 CTCSS and DCS sub-audible tones per channel, as a community repeater without additional equipment\*
- Covers key frequency bands from 136MHz to 941MHz
- Tone on idle and CWID
- System interface options include Isolated Audio, Isolated Audio E&M, TaitNet MPT Trunked, TaitNet RS232 and TaitNet Ethernet
- Ethernet system interface option enables IP management of communications system

### High specification base station design

- Fast key-up time of 2ms
- Monitor and manage 150 parameters, including 43 alarm parameters remotely
- Computer Controlled Interface (CCI) protocol allows external computer equipment to remotely monitor and control a TB8100 base station
- Power Save option has receive power as low as 60mA, ideal for solar sites
- Built-in spectrum analyser measures received signal levels across the selected band

\*Advanced Profiles option required

# TB8100

## SPECIFICATIONS

### Complete remote operation

With its many remote monitoring options the TB8100 is ideal for isolated sites. Users can manage more than 150 parameters remotely with TB8100 Service Kit software.

### Advanced diagnostics

Monitor your entire network from a central location with the TB8100 alarm reporting option. This means you do not need to manually connect to each base station to check it, minimising maintenance time and costs.

### Tough design

Specified to operate continuously at full power, at up to 4,572m (15,000ft) in temperatures as high as 60°C (140°F). Large heatsinks mean that no spacing is required between base stations.

### Excellent RF specifications

Outstanding specifications for selectivity, sensitivity and adjacent channel interference make the TB8100 ideal for use in high-noise environments.

### Flexible software

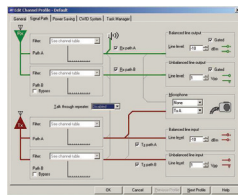
The Advanced Profiles option gives you precise control over your channel configuration and access to the most advanced base station features.

### Transition to digital

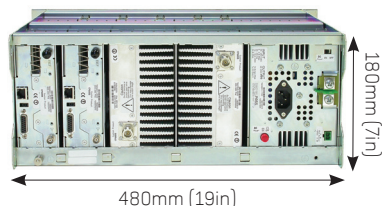
A common hardware platform makes it a smooth transition from the TB8100 to digital technologies, including P25 and DMR (Digital Mobile Radio).

### Tait solution

Combined with Tait terminals and TaitNet infrastructure products, Tait offers customised communication solutions, all working seamlessly with the intelligent, flexible TB8100 base station/repeater.



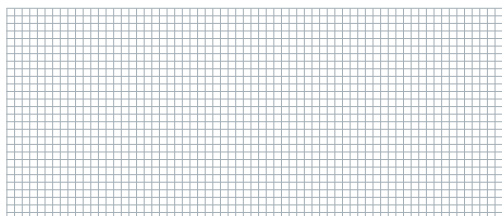
Comprehensive and intuitive software can be used to change configuration quickly and easily.



Clean back panel design with industry-standard interfaces enables easy connectivity to the rest of the system and third party vendors. Pictured: dual 50W system with AC/DC Power Management Unit.

Front-loading modules slip into the 4U subrack, making building the system, replacing a module or accessing a system interface board fast and simple. TB8100 modules include:

- Reciter - contains the receiver and exciter.
- Power Amplifier - available as 5W, 50W and 100W modules.
- Power Management Unit - provides AC and/or DC power, and includes an auxiliary power supply.
- System Interface - provides access to multiple interfaces.
- Subrack, Front panel and Control panel.



ISO 9001  
ISO 14001

Tait is your complete supplier of radio communications equipment offering mobile, portable and infrastructure solutions. Tait is renowned for its flexibility, responsiveness and commitment to producing innovative world-class mobile radio communications products.

Specifications are subject to change without notice and shall not form part of any contract. They are issued for guidance purposes only. Please note that not all frequency bands and power outputs are available in all markets.

The word Tait and the Tait logo are trademarks of Tait Electronics Ltd. Tait is an ISO9001: 2000 and ISO 14001: 2004 certified supplier.

AUTHORISED DEALER

## TB8100 Specifications

### General

	Operational Frequency	PA
VHF	136–156MHz	136–174MHz
	148–174MHz	
	174–193MHz	174–225MHz
	193–225MHz	
UHF	380–420MHz	380–520MHz
	400–440MHz	
	440–480MHz	
	470–520MHz	
700/800MHz	762–776/850–870MHz (Tx) 792–824MHz (Rx)	760–870MHz
900MHz	852–854/928–930MHz 896–912MHz (Rx) 927–941MHz (Tx)	850–960MHz
Electronic Switching Range	≥2% of centre frequency (eg: 10MHz @ 500MHz)	
Channel/Network Capacity	255	
Channel Spacing	12.5/20/25kHz	
Channel Increment	0.125kHz	
Dimensions (WxDxH)	480 x 390 x 180mm (19 x 15 x 7in) 4U Rack Space	
Weight	Single 5/50W: 21kg (45lb) Single 100W: 22kg (47lb) Dual 5/50W: 28kg (61lb)	
Operational Temperature	-30° to 60°C (-22° to 140°F)	
Description	Modular base station/repeater/receiver	
System Types	Conventional FM, MPT 1327 Trunked, QS <sup>2</sup> Simulcast and others	
Frequency Stability	±0.5ppm	
External Reference	10MHz or 12.8MHz	
Power Consumption*	<b>12VDC</b>	<b>24VDC</b>
Standby (20ms Receiver Cycling)	720mA	360mA
Sleep (200ms Receiver Cycling)	400mA	200mA
Deep Sleep (1s Receiver Cycling)	109mA	61mA
Tx @ 5W**	2.6A	1.3A
Tx @ 50W**	10A	5.4A
Tx @ 100W**	19.2A	10.3A
	<b>48VDC</b>	<b>240VAC</b>
	170mA	
	98mA	
	31mA	
		118VA
		177VA
		262VA

Supply Requirements	88 to 264V (PFC power factor correction)
Mains	12V, 24V, 48V (Nominal +ve or -ve earth)
DC	
Options	Optional coax relay kit

### Audio

Audio Input Types	Input	Output
	600Ω Balanced	600Ω Balanced
	Unbalanced	Unbalanced
	Microphone	Monitor Speaker
Audio Interface Level (for nominal 60% deviation)	Balanced -20 to +10dBm	Balanced -20 to +10dBm
Audio Response Bandwidth	Unbalanced 0.3Vpp to 3Vpp	Unbalanced 0.3Vpp to 3Vpp
Audio Response	300kHz to 3.4kHz	
Audio Distortion	Flat or de-emphasised	
Audio Filtering Characteristics	≤2% at -70dBm	
	Flat or de-emphasised	
	Full band or speech band	
	Subaudible band only	
	Filters can be applied independently to each of the input sources	

### Transmitter

Modulation Limiting	±2.5KHz (NB), ±5KHz (WB)
Transmit Rise Time	2ms
Transmit Power Rating	100W Continuous (programmable from 10W to 100W) 50W Continuous (programmable from 5W to 50W) 5W Continuous (programmable from 1W to 5W)
FM Hum and Noise	-50dB (NB), 55dB (WB)
Conducted/Radiated Emissions	-36dBm to 1GHz

### Receiver

Sensitivity	-119dBm (0.25μV)
Spurious Responses	≥100dB
Intermodulation	80dB (NB), 85dB (WB)
Selectivity	85dB (NB), 90dB (WB)
Ultimate Signal to Noise	45dB (NB), 53dB (WB)

\*Power consumption is dependent on the status of the licensed power save software features and the selected settings for Tx key time, Rx cycling.

\*\*Transmit tests without fans operating.

All parameters are measured in accordance with TIA/EIA 603 procedures unless otherwise specified.